

### Close Coupled Toilet



## Features

- Stylish design, high profile Close Coupled Toilet
- Dual flush system
- Water Saving

## Specifications

Flush System : Wash Down

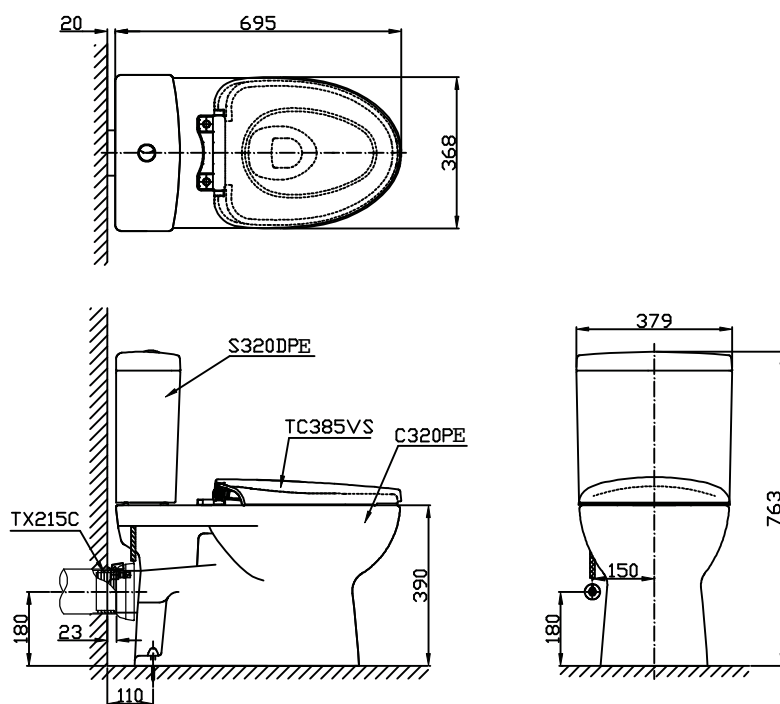
Water Use : 4.8/3L

Rough-in : H=180mm

Size : 379W x 695D x 763H

Water Pressure : 0.05MPa ~ 0.75MPa

CST320DPV



## Parts Description

Fittings, Tank, Slip-In Connector, Seat & Cover are included

- **CST320DPV**  
Elongated Close Coupled Toilet  
(Seat & Cover Material : PP)

## Colors

- White

Please consult a TOTO representative for details