

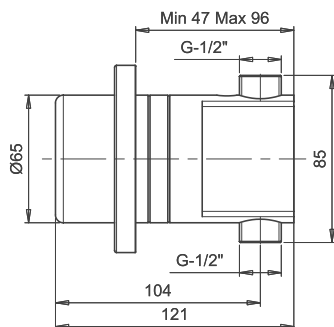
INSTALLATION AND MAINTENANCE GUIDE

JUPITER 1032

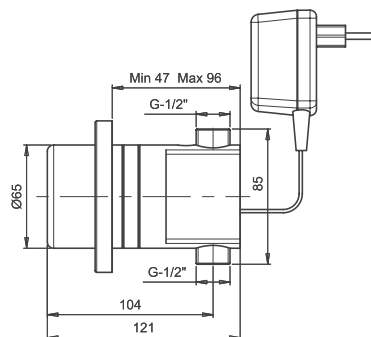


ELECTRONIC FLUSH VALVE FOR URINAL

TECHNICAL DATA



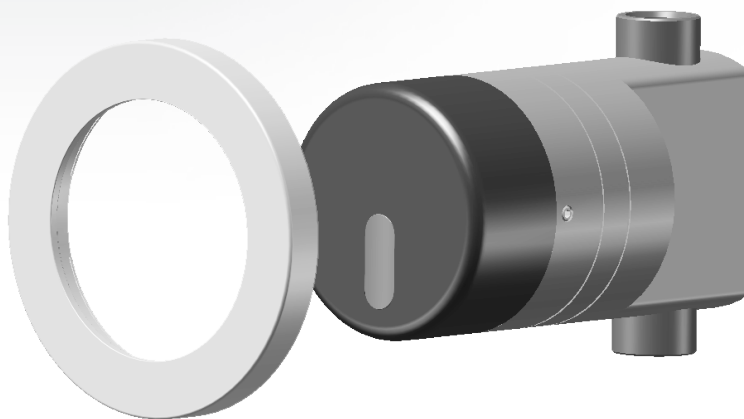
JUPITER 1032



JUPITER 1032 E

Power supply:	Internally mounted 9V battery or 9V transformer
Recommended water pressure:	0.5-8.0 bar (7-116 PSI) With water pressure of more than 8 bars, use a pressure reducing valve for reduction.
Preset sensor range:	600 mm Adjustable
Minimum sensor range:	300 mm
Maximum sensor range:	800 mm
24 Hours automatic flush	Maintains trap seal every 24 hours when not used
Preset flushing time:	6 seconds. Adjustable
Prior use flush mode:	Optional feature

PACK CONTENTS

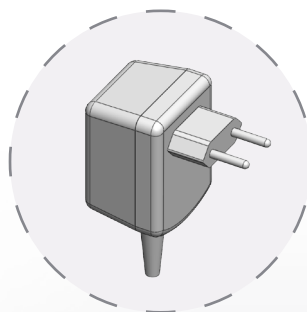


1x Cover plate

1x Electronic shower control
body and attachments



2x Allen keys 2 mm and 4 mm



1 x 9V Transformer (E version)

PRE-INSTALLATION INFORMATION

Check contents

Separate all parts from the packaging and check each part with the pack contents section.

Pay attention to the different models variations.

Make sure all parts are accounted for before discarding any Packaging material.

If any parts are missing, do not attempt to install your electronic flush valve until you obtain the missing parts.

Warnings

Do not install the flush valve facing a mirror or any other electronic system operated by an infrared sensor.

To prevent reflection problems, it is recommended to keep a minimum distance of 1.50 meters between the flush valve and other objects.

Preparation for installation

Flush water supply lines thoroughly before installing the flush valve. Do not allow dirt, Teflon tape or metal particles to enter the flush valve.

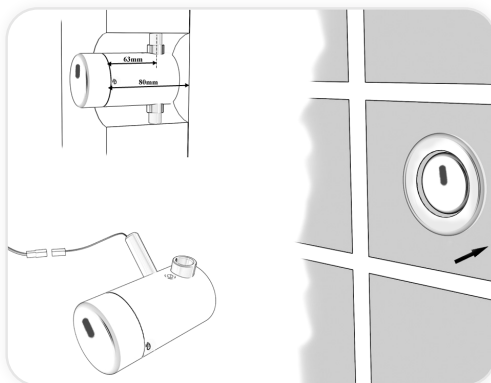
Shut off water supply.

Important

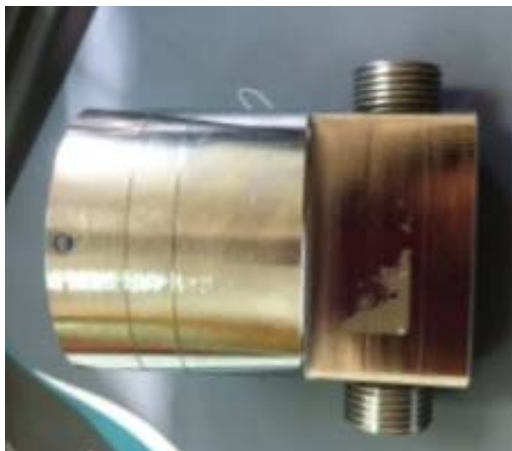
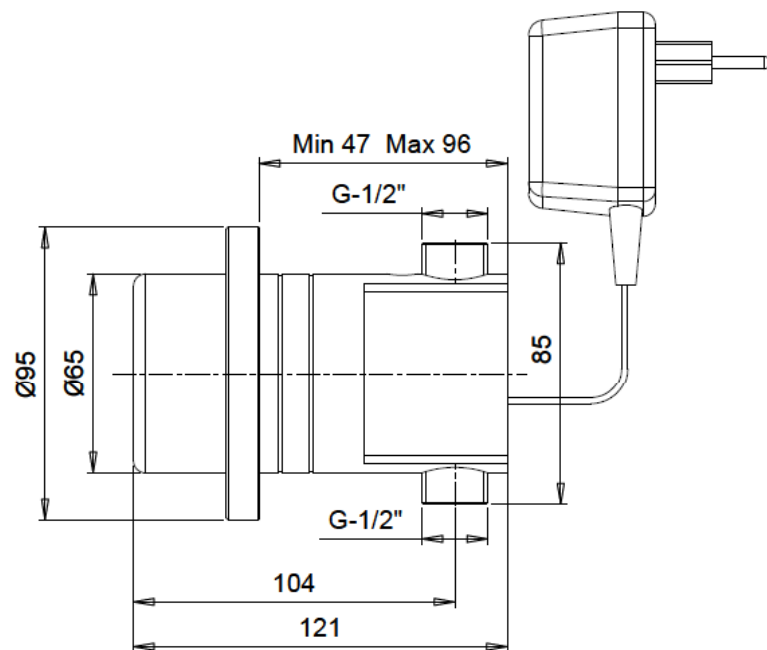
All plumbing is to be installed in accordance with applicable codes and regulations.

INSTALLATION

- 1) Shut off the water supply.
- 2) Cut an adequate opening in the wall for the dimensions of the product and if your model is Jupiter 1032 E for the electricity wires.
- 3) Insert the product through the wall opening and assemble the inlet to the water supply pipe in the wall.
- 4) Connect the flush valve outlet to the pipe leading to the urinal's inlet.
- 5) Mount the flush valve body to the wall so it will protrude from the wall as shown in the drawing.
- 6) If your model is Jupiter 1032 E place the transformer near the electricity plug (up to 3 meters from the flush valve body) and connect the transformer wire to the flush valve body through the hole.
- 7) Turn on the water supply and check for leaks.
- 8) After the ceramic tiles are installed, assemble the cover plate over the flush valve body on the wall.
- 9) To operate the system stand a few second in front of the sensor. The Jupiter 1032 will flush automatically when you leave the urinal.
- 10) If the range is unsatisfactory, refer to the section titled "Range adjustment".



Modelo 1032E con transformador



Modelo 1032B con Bateria

