

COBRA LE-128-15 Shower Stop Tap

Technical specifications



Cobra Watertech (Pty) Ltd
 Reg. No. 2003/027475/07
 P.O. Box 1096, Krugersdorp, 1740, South Africa
 20 Wright Street, Factoria, Krugersdorp, South Africa
 Tel: +27 11 951 5000 Fax: +27 11 955 4047
 Email: marketing@cobrawatertech.co.za
 Website: www.cobra.co.za



Figure 1: LE-128-15

One pair undertile stop taps

ITEM NUMBER	ITEM DESCRIPTION
• LE-128-15	Shower/basin stop taps

Includes:

- * Two Stop taps (hot & cold handles).
- * Sliding wall flanges.
- * ¼ turn ceramic disc headparts (1 x Anti clockwise closing, 1 x Clockwise closing).
- * Chrome Plated
- * DZR Brass Construction
- * Max working pressure 600kpa
- * Tested to 2000kpa
- * For use with domestic water systems >0°C, 90°C

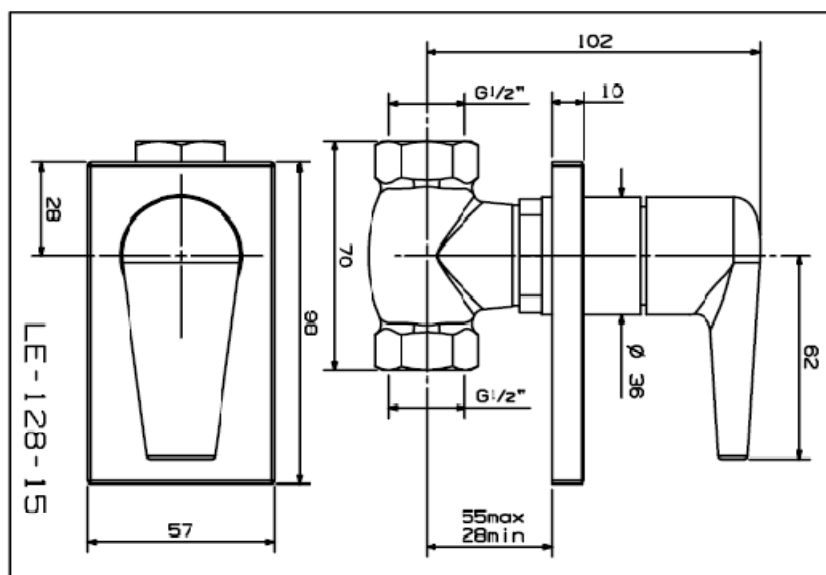


Figure 2: LINE DRAWING

Care and maintenance

Cleaning

To maintain the lustre of chrome plated surfaces simply wipe occasionally with a soft damp cloth using a mild dishwashing detergent or soap solution. Rinse then dry and buff with a soft cloth.

Warning!

Many household and industrial cleaners contain abrasives and or harsh chemical compounds and acids. Do not use these cleaners or they may irreparably discolour, dissolve or scuff the chrome plate finish. Do not use abrasive cloths or scouring pads.

Maintenance

The frequency and extent of maintenance required for this product will vary according to prevailing site and operational conditions. No regular maintenance is required.

Spare parts are available for key components.

Cobra Service call centre contact	0861212121
Cobra Service E-Mail	service@cobrawatertech.co.za
Cobra web site	www.cobra.co.za

Warranty:

All goods are subjected to approved inspection/test processes prior to dispatch. All goods are warranted to be free of defects in material, workmanship and design at the time of dispatch.

Defective goods will be replaced/repared at our discretion, free of charge at the factory, but we are not liable for any damage of any other nature, including consequential or indirect loss arising from any such defect. Our obligation to repair/replace is in lieu of all and any other liability on our part.

This warranty applies only to correctly installed and maintained goods. Wear and tear considered normal at the locality of the installation is excluded from the ambit of the warranty.

The warranty may be affected under the following conditions:

- Water conditions are particularly aggressive either hard, soft or other
- Products are not installed by a registered/accredited installer
- Hot water supply is in excess of normal domestic water temperature

The warranty is valid for 10 years.

DZR Brass

Dezincification of brass is a critical aspect of the fitness for purpose (quality) of plumbers fitting that is in contact with water. The risk and rate of dezincification increases with water hardness and the acidity or alkalinity of water away from a PH of 7. Dezincification is the name given to the corrosion of brass. Dezincification resistant brass, or DZR brass, (Sometimes designated CR or DR) is the name given to brass that has exceptional resistance to this corrosion. The resistance is imparted by the adherence to SABS specifications for chemical composition and careful process controls. In order to be called DZR brass each batch must pass an ISO 6509 dezincification resistance laboratory test. SABS/ISO test samples. In South Africa the use of DZR brass for components of brass plumber's fittings that are in contact with water is national law. Building inspectors are being trained to demand the removal of plumber's brassware that does not conform to statutory law.

Cobra Dezincification resistant brass

Cobra DZR brass for casting ingot follows the specification of SA alloy code 9A which is a derivative of British Standard DZR brass composition CZ132. In addition to this extra grain refining processes are exerted on the material in the foundry. There is a definite link between grain size and dezincification resistance that is both documented within the industry and has been the subject of extensive study in our two Cobra foundry laboratories. The smaller the grain size the greater the resistance to corrosion. Cobra brass is refined to the point that individual grains no longer exist and our brass is one homogenous mass. These refining processes are in addition to the composition requirements. Cobra brass for pressing and turning follows the same specification as the casting material but with slight modifications to suit the machining processes to which it will be exerted.